

# Sing Forth, O Zion

Sequence for the Feast of Corpus Christi

Words: St. Thomas Aquinas

© Bruce Goodman 1974

Voice

Sing forth, O Zi- on, sweet-ly— sing the

Piano

Detailed description: This system contains the first two staves of music. The top staff is for the voice, starting with a whole rest followed by a melodic line. The bottom staff is for the piano, consisting of two staves with a bass line and a treble line of chords. The key signature has two flats and the time signature is 4/4.

5

prais-es of thy Shep - herd— King, in hymns and cant - i - cles di - vine.

Pno.

Detailed description: This system contains the next two staves of music. The voice line continues with the lyrics. The piano accompaniment continues with chords and a bass line. A measure rest is present at the end of the voice line.

8

Dare all thou canst, thou hast no— song wor - thy his prais-es to pro -

Pno.

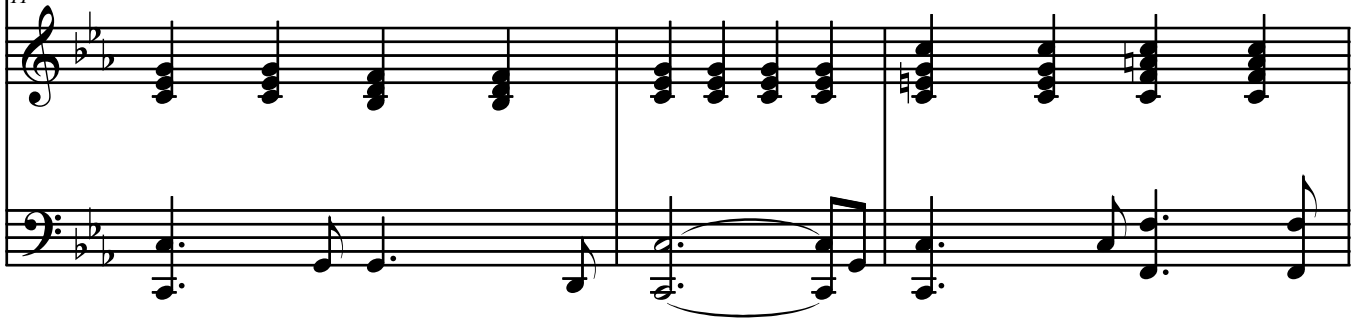
Detailed description: This system contains the final two staves of music. The voice line continues with the lyrics. The piano accompaniment continues with chords and a bass line.

11



long, so far sur-pass-ing powers like thine. Be - hold the bread of an-gels sent for

11



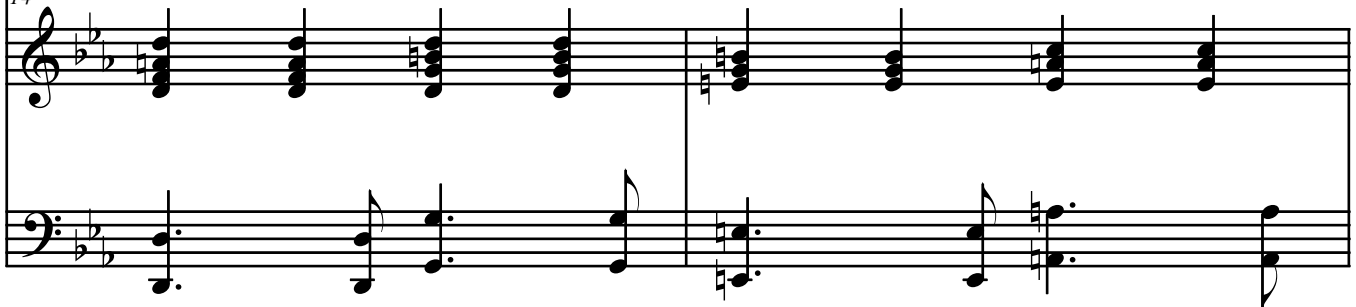
Pno.

14



pil - grims in their ban - ish-ment, the bread for God's true child - ren meant that

14



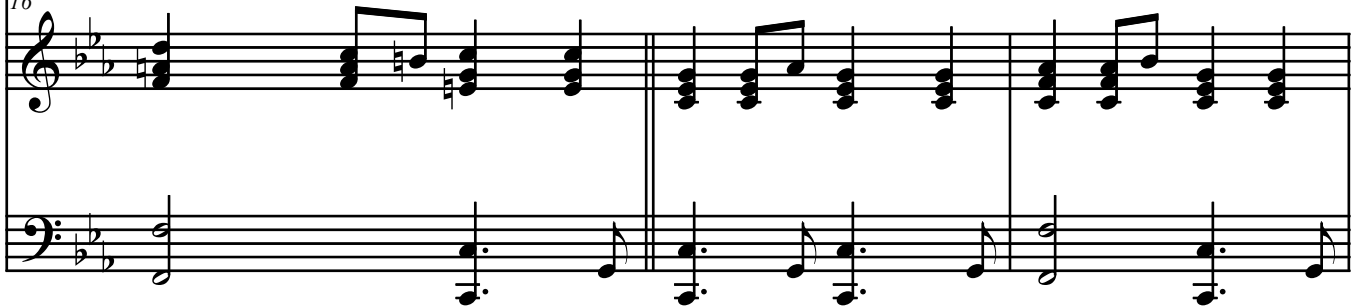
Pno.

16



may not un-to dogs be gi-ven. Oft in the old-en types fore - sha - dowed; in

16



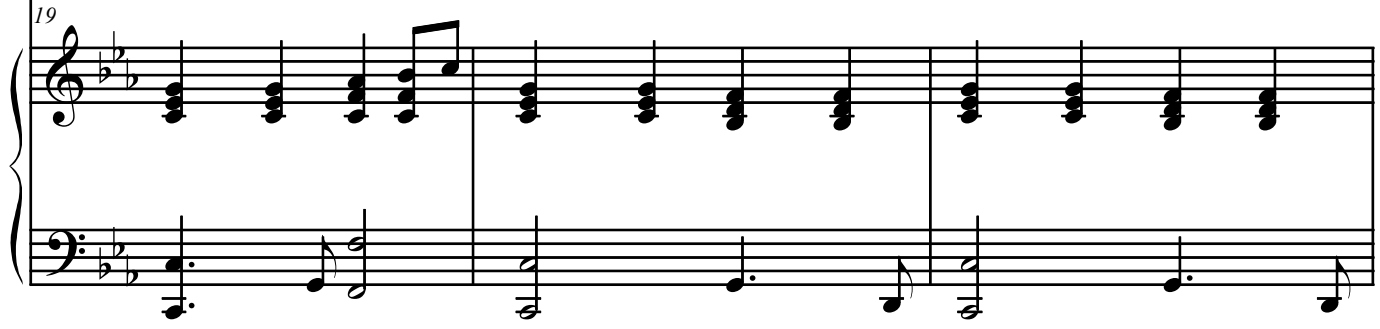
Pno.

19



I- saac in the al - tar — bowed, and in the an-cient pas-chal food and in the man-na sent from

Pno.

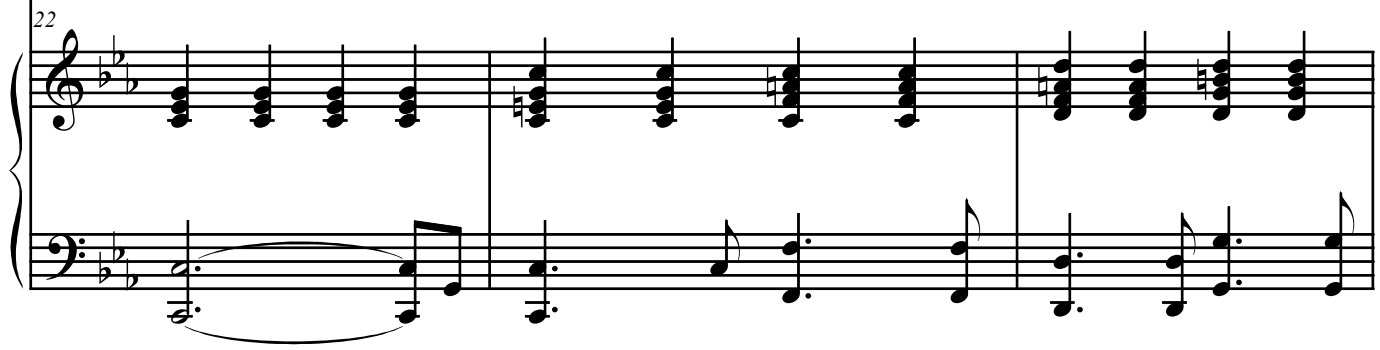


22



hea-ven. Come then, good shep - herd, bread di-vine,

Pno.

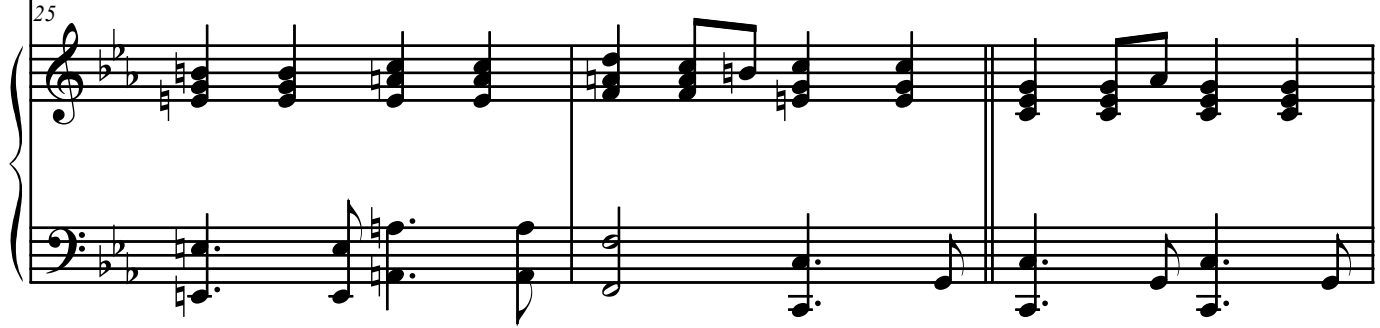


25



Still show to us they mer - cy — sign. — Oh, feed us still, still

Pno.



28

keep us — thine; so may we see thy glo-ries shine in fields of im - mortal - i -

28

Pno.

31

ty. O thou the wis - est, might-i - est, best, our pre-sent food, our

31

Pno.

35

fu - ture — rest. — Sing forth, O Zi - on, sweet - ly — sing the

35

Pno.

38

A single musical staff in treble clef with a key signature of three flats (B-flat, E-flat, A-flat). The melody consists of eighth and quarter notes, ending with a half note. The lyrics are: "prais-es of thy Shep-herd— King, in hymns and cant-i-cles di-vine."

prais-es of thy Shep-herd— King, in hymns and cant-i-cles di-vine.

38

Pno.

Piano accompaniment for the vocal line. The right hand (treble clef) plays chords and a melodic line, while the left hand (bass clef) plays a simple bass line. The key signature is three flats. The piece concludes with a double bar line.